



**RAYNERS**  
TOWN & COUNTRY

**HILLVIEW**  
WHYTELEAFE, SURREY, CR3 0HE



# 21 HILLVIEW

WHYTELEAFE, SURREY, CR3 0HE

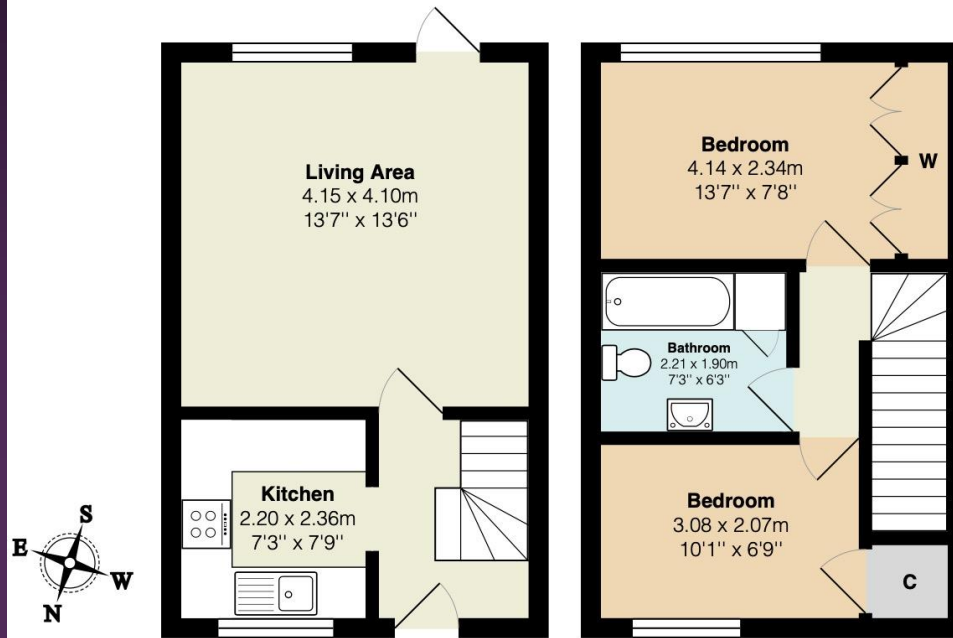
Guide Price £350,000

A modern two bedroom mid terrace house situated in a cul de sac close to both Whyteleafe and Upper Warlingham stations. The property has recently been redecorated and, in our opinion, is presented to the market in a clean and tidy condition throughout. The ground floor accommodation includes a modern fitted kitchen to the front and a reception to the rear giving access to the private garden. On the first floor are two bedrooms both with fitted wardrobes and a modern bathroom furnished with white sanitary ware. The property comes with a private parking space. Offered to the market with no onward chain this house would make a fantastic home for a first time buyer, downsizer or an investor. Viewing is highly recommended.





## 21 Hill View



Total Area: 54.9 m<sup>2</sup> ... 591 ft<sup>2</sup>

All measurements are approximate and for display purposes only

Tenure: Freehold

Local Authority: Tandridge District Council

Council Tax Band: D

EPC Rating: C

VIEWING STRICTLY BY APPOINTMENT VIA THE SELLING AGENT

[www.raynersproperties.com](http://www.raynersproperties.com)

IMPORTANT: we would like to inform prospective purchasers that these sales particulars have been prepared as a general guide only. A detailed survey has not been carried out, nor the services, appliances and fittings tested. Room sizes should not be relied upon for furnishing purposes and are approximate. If floor plans are included, they are for guidance only and illustration purposes only and may not be to scale. If there are any important matters likely to affect your decision to buy, please contact us before viewing the property. R772

Sales  
01883 622 258  
[Enquiries@raynersproperties.com](mailto:Enquiries@raynersproperties.com)

Lettings  
01883 622 244  
[Enquiries@raynersletting.com](mailto:Enquiries@raynersletting.com)

Land & New Homes  
01883 744 344  
[Warlingham@raynersproperties.com](mailto:Warlingham@raynersproperties.com)

**RAYNERS**  
TOWN  COUNTRY